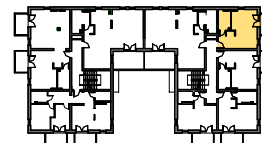


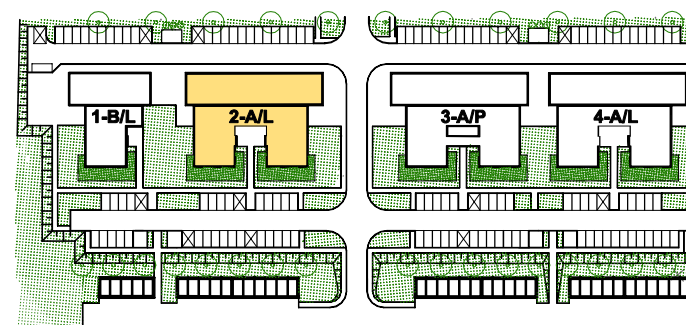
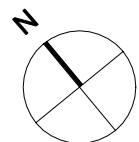
MIESZKANIE M-NR10 I PIĘTRO P.U. 31,7m²

01 POKÓJ DZIENNY + ANEKS. KUCH.	26,6m ²
02 ŁAZIENKA	5,1m ²

BUDYNEK 2-A/L, DZ. NR 867/24



PLAN BUDYNKU



PLAN OSIEDLA